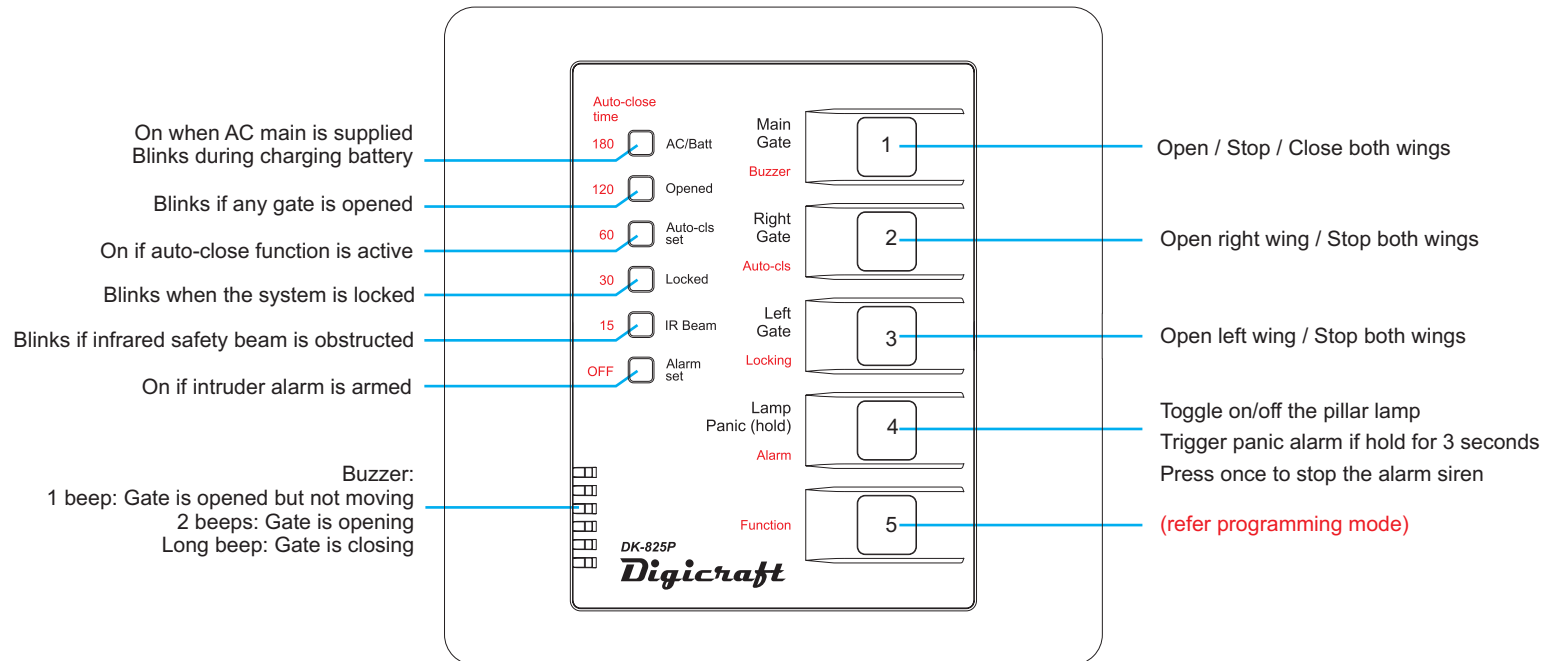


# Normal operation mode

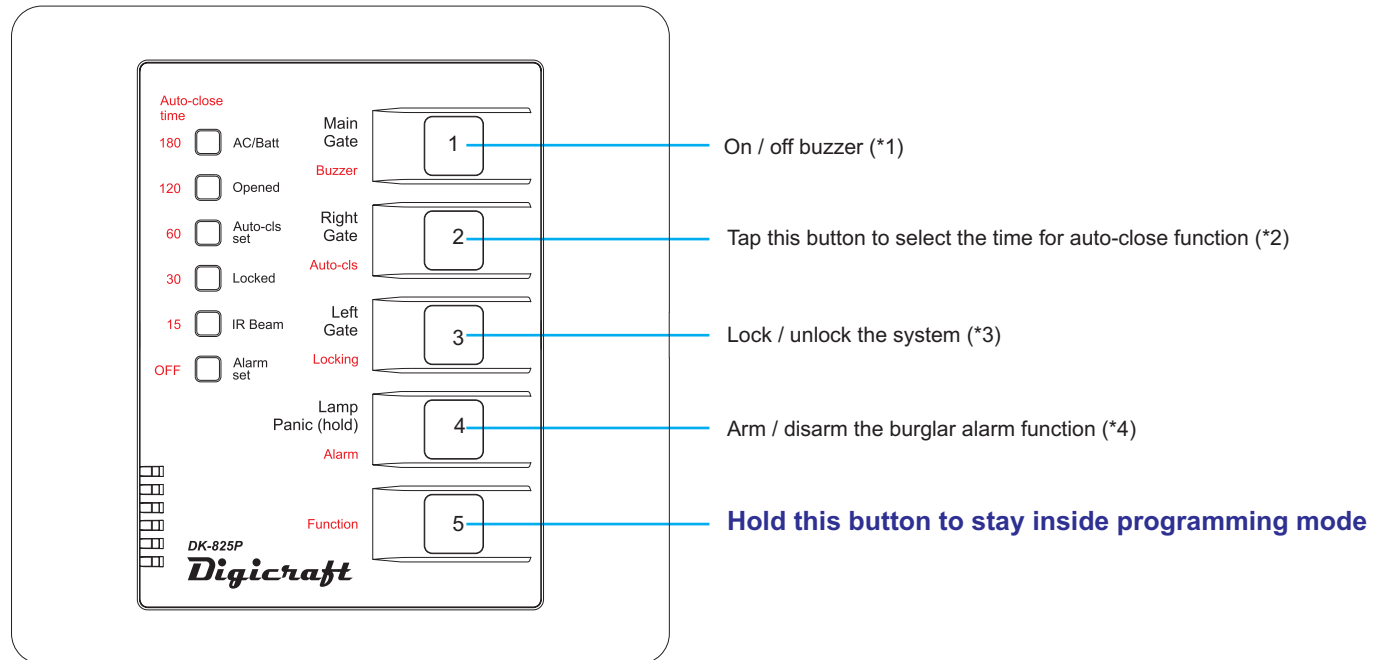


Note: Press button 1 and 2 simultaneously will override the infrared safety beam to close to gate (if the infrared beam is malfunction)

Note: If the [AC/Batt] indicator blinks for days, it indicates the backup battery cannot be fully charged and a replacement is suggested.

# Programming mode

Hold the "Function" button to stay inside programming mode



## Press and hold button 5 [Function], then press button 1 to 4 to program a function

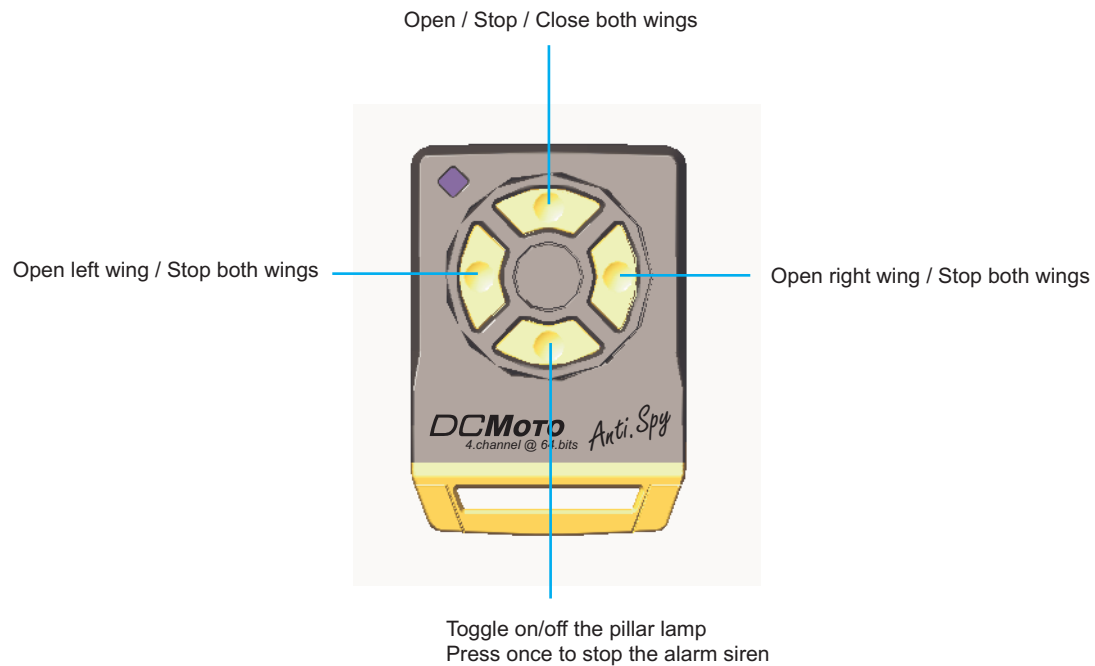
(\*1) Buzzer is an audible indicator is the gate is opened. You can toggle on / off the sound

(\*2) When entering this function, all LED indicators light up except one is blinking, the time label adjacent to it is the auto-close time selected. [Auto-cls set] indicator is on if a time is selected

(\*3) [Locked] indicator is on when the system is locked. During this status, No switch is able to trigger the gate to move. Auto-close function is also halted. However, alarm and lamp function remain active.

(\*4) If burglar alarm function is armed, [Alarm set] indicator is on. If someone force in the gate after it is closed, alarm siren will be triggered. Alarm function is bypassed during the gate is opened

## Normal functions:



## Special functions:

